

Doris Leslie Blau

Doris Leslie Blau

An Eclectic Selection
of Antique Carpets



Forty years ago, I became the first American woman in the field of antique carpets to have my own gallery, specializing in avant-garde and incomparable pieces. The impact of color and the quirkiness of design were always the key factors that made my gallery a bit offbeat.

While in London seventeen years ago, I was invited to view a group of carpets that had been removed from a stately home in the English countryside. When I arrived at my destination, I could not help but notice the teenager who was washing a carpet on the floor with great interest and intensity. I commented to my host Yosef Bolour about this young man's enthusiasm for such a menial task and was proudly informed that this hard worker was his eldest son, Nader, who was leaning the business from the ground up. Little did I know that our paths were fated to cross again years later!

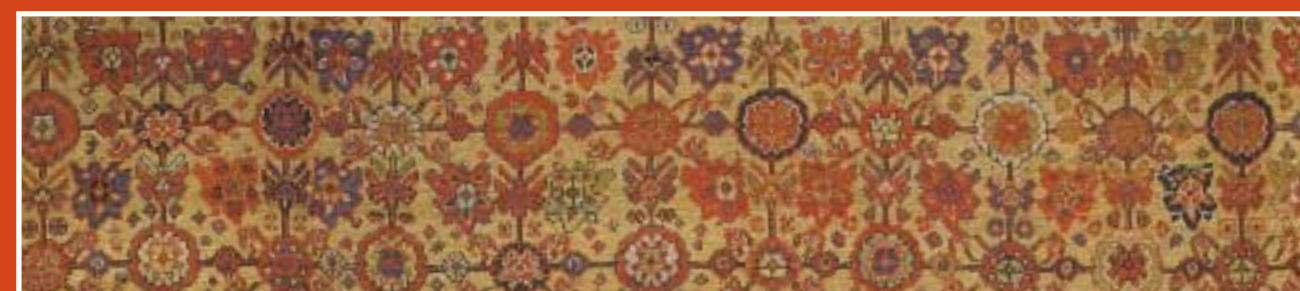
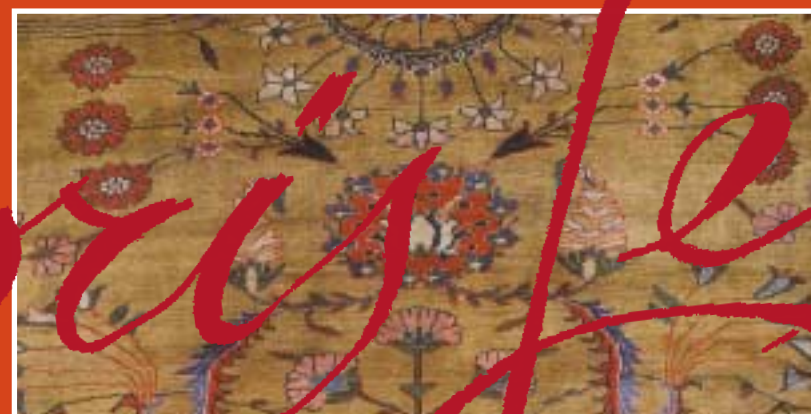
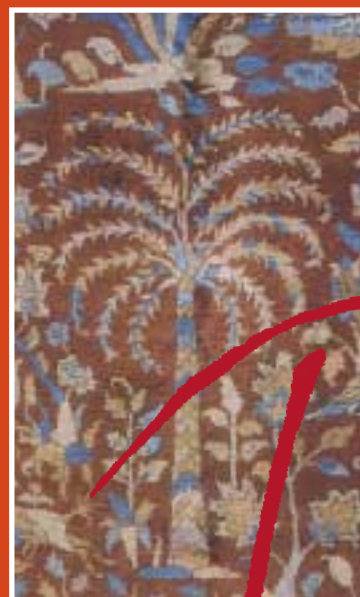
It is with great conviction that I have handed over the future of Doris Leslie Blau Ltd. to Nader Bolour, the intense young man I met so long ago. I am confident he will continue to utilize the same criteria that have always made carpets sold under my name the outstanding examples for the interior designer, the architect and their clients.

It is with much enthusiasm that I have compiled a number of our carpets in to this pictorial record.

As the firm continues to grow, not just in antique carpets but also new carpets, and most recently in to 20th century decorative arts, my passion is stronger than ever. For me the learning process is unending. It is never long before you are able to find new treasures, even after feeling the one you just sold is irreplaceable.

My deepest gratitude goes out to our clients, notably the Interior Design community. They have, for the past forty years helped Doris be a visionary, a leader in our profession, and a reputable supplier of unusual carpets for their projects. Those bonds and the friendships made are in fact Doris' greatest gifts to me. The task ahead is my personal commitment to continue bringing a bit of "soul" into each project and every room.

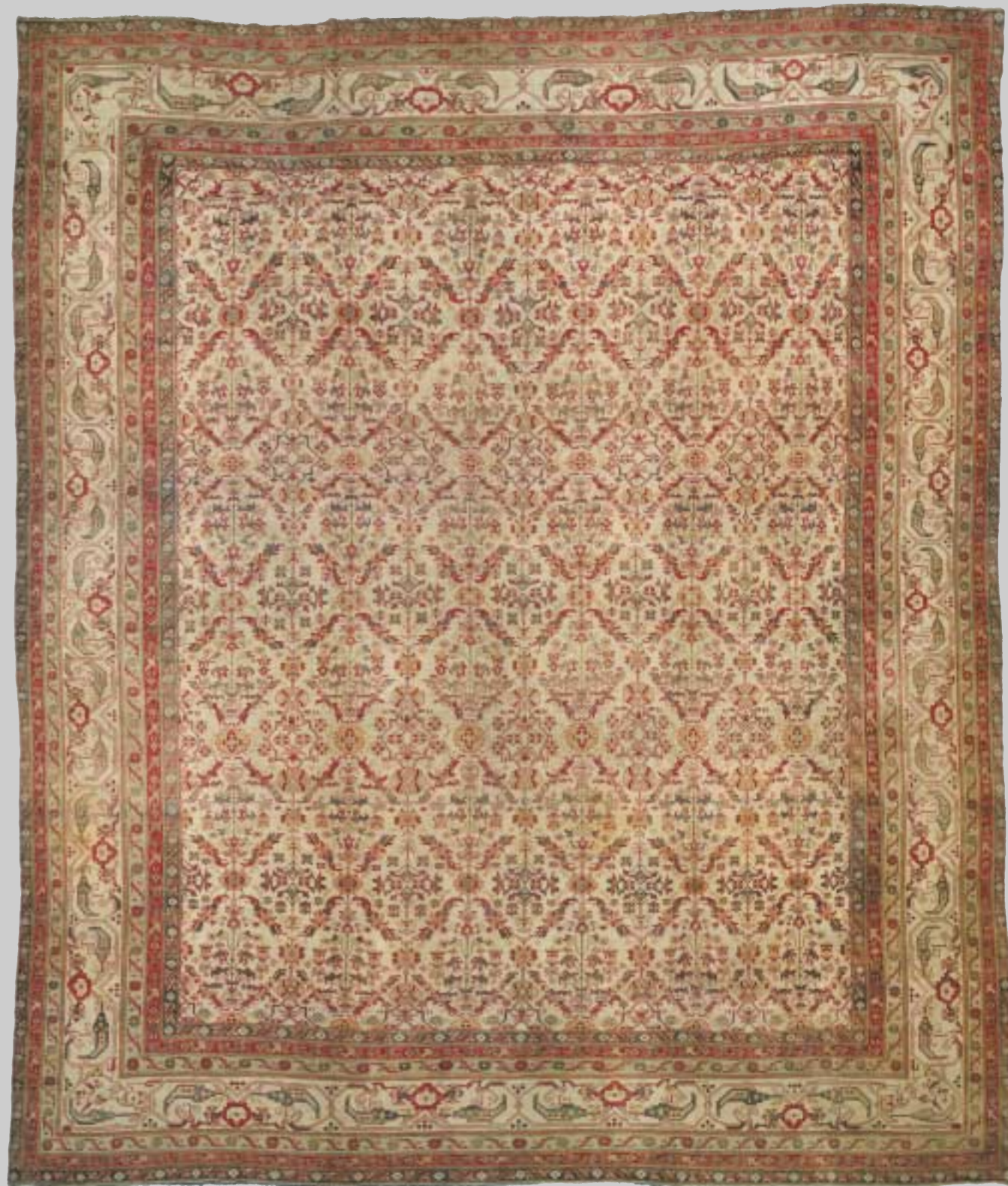




Index of carpets by size

10.7 x 8	Early 20 th century Persian Tabriz	26	14.7x11.9	Early 20 th century Persian Tabriz	108	16.8 x13.10	Early 20 th century North Indian (size adjusted)	33	19 x13.8	Early 20 th century Indian Cotton Agra	105
10.8 x 7.4	French Modernist attributed to "Jean Burkalter"	138	14.8 x11.6	Early 20 th century Indian Cotton Agra	60	16.9 x12 Late	19 th century Persian Sultanabad (size adjusted)	35	19 x13.10	Late 19 th century Persian Khorassan	62
10.10 x 9.10	Mid 20 th century American Hooked	145	14.8 x12	Irish Donegal Designed by Gavin Morton circa 1910	143	16.9 x14	Late 19 th century Persian Sultanabad	74	19 x14.6	1920's Spanish	116
			14.9 x11.4	Early 20 th century Turkish Oushak	106	16.10 x11.10	Late 19 th century Persian Sultanabad	14	19 x15.2	Late 19 th century Chinese	95
11.4 x 9.6	Late 19 th century Persian Tabriz	84	14.10 x14.2	Late 19 th century Tibetan	142	16.10 x13.2	Late 19 th century Persian Sultanabad	27	19.5 x14.6	Late 19 th century Persian Tabriz	112
11.6 x 8.5	1920's Chinese Deco	146				16.10 x14.4	Early 20 th century Indian Amritsar	39	19.6 x12	Early 20 th century Indian Lahore	29
11.7x 9	Late 19 th century Persian Bidjar	45	15 x10.5	Late 19 th century Persian Tabriz	85				19.6 x16.7	Mid 19 th century Turkish Ghiordes	100
11.10 x 9	Late 19 th century Persian Tabriz	87	15 x11.5	Early 20 th century Persian Malayer	11	17.2x14.2	Late 19 th century Indian Agra	10	19.7 x12.7	Late 19 th century Persian Kashan	102
			15 x13	Late 19 th century Turkish Oushak	121	17.2 x 14.9	Late 19 th century Indian Amritsar	70	19.8 x13.2	1940's French	139
12 x 9	Late 19 th century Indian Amritsar	69	15.2 x11.10	Late 19 th century Indian Amritsar	68	17.3 x11	Early 20 th century Persian Tabriz	44	19.10 x15.5	Early 20 th century North Indian	64
12.2 x 8.3	Early 20 th century Persian Tabriz	92	15.5 x11	Late 19 th century Persian Tabriz	122	17.6 x11.2	Late 19 th century Persian Kirman	82	20 x14	Late 19 th century Turkish Borlou	17
12.5 x 9	Late 19 th century Persian Kirman	67	15.5 x12	Late 19 th century Persian Kirman	19	17.6 x11.3	Late 19 th century Persian Feraghan	63	20.2x13	Late 19 th century Persian Kirman	47
12.6 x11.2	Early 20 th century Oushak	130	15.6 x11.4	Late 19 th century Persian Sultanabad	90	17.6 x12.2	Late 19 th century Persian Sarouk Feraghan	81	20.2x14	Late 19 th century Persian Sultanabad	129
12.7 x 8.10	Late 19 th century Persian Tabriz	36	15.6 x11.10	Mid 19 th century Persian Bakshaish	115	17.6 x12.10	Late 19 th century Persian Sultanabad	78	20.4 x16.4	Late 19 th century Persian Kirman	131
12.9 x 9.6	Late 19 th century Persian Tabriz	127	15.7x10.8	Early 20 th century Persian Tabriz	86	17.6 x13.5	Late 19 th century Indian Agra	101	20.6 x15.6	Indian Agra 1870 circa	91
12.9 x 9.9	Late 19 th century Persian Tabriz	38	15.7x12.2	Late 19 th century Indian Agra	103	17.7x12.6	Early 20 th century Persian Khorassan	18			
12.9 x10	French carpet by Jules Coudyser circa 1920	141	15.9 x13.10	1950's French Modernist Multi Technique	140	17.7 x13.9	Late 19 th century Chinese	94	21x14	Late 19 th century Persian Tabriz	61
						17.8 x12.9	Mid 19 th century Turkish Ghiordes	48	21.2 x13.9	Late 19 th century Persian Sarouk	31
13 x 9.4	Late 19 th century Persian Tabriz	15	16 x10.3	Late 19 th century Persian Senneh	93	17.9 x13.4	Late 19 th century Persian Tabriz	49	21.5 x16.10	Late 19 th century Persian Kirman (size adjusted)	133
13 x 9.5	1920's Chinese	147	16 x12	Late 19 th century Indian Agra	13	17.10 x11	Late 19 th century Persian Tabriz	52	21.7x16.6	Late 19 th century Persian Meshad	111
13x10	Early 20 th century Persian Tabriz	58	16 x12	Late 19 th century Persian Kirman	99						
13.2 x 8.3	Early 20 th century Chinese (size adjusted)	96	16 x12.4	Early 20 th century Persian Tabriz	50	18 x11.2	Late 19 th century Persian Sultanabad	28	22.5 x14.3	Late 19 th century Persian Kirman	55
13.2 x 9.9	Early 20 th century Cotton Agra	107	16 x13.5	Late 19 th century Turkish Ghiordes	132	18x15.10	1920's Marvadia	137	22.8 x12.3	Late 19 th century Persian Sultanabad	54
13.2x10	Late 19 th century Persian Sultanabad	89	16 x13.6	Late 19 th century Persian Sultanabad	126	18.4 x13.10	Late 19 th century Turkish Oushak	114	22.8 x13.6	Late 19 th century Persian Kirman	125
13.2x10.3	Mid 19 th century Persian Feraghan	110	16 x13.8	Mid 19 th century Persian Feraghan	41	18.5 x12	Late 19 th century Persian Kirman	128	22.9 x13.6	Late 19 th century Persian Kirman	65
13.5 x11.9	Late 19 th century Persian Sultanabad	80	16 x14	Late 19 th century Indian Agra	37	18.6 x 8.8	1930's Chinese	134			
13.8 x11.7	Brussels Part Silk Fragmentary Tapestry Weave carpet signed H.Reydams circa 1700	25	16 x14.7	Early 20 th century North Indian	73	18.7 x 9.7	Early 20 th century Chinese	135	23.2x12.8	Late 19 th century Indian Amritsar	23
13.10 x 8.5	Early 20 th century Persian Tabriz	66	16.2x11.8	Late 19 th century Persian Tabriz	117	18.7x12.10	Late 19 th century Turkish Oushak	98			
13.10 x11	French Modernist circa 1930	144	16.2 x13.9	Late 19 th century Indian Amritsar	109	18.8 x14	1930's Chinese Deco	149	24.10 x13.7	Early 20 th century Persian Malayer	57
13.10 x11	Late 19 th century Persian Sultanabad	71	16.3 x13.8	Late 19 th century Turkish Oushak	46	18.8 x16	Late 19 th century Persian Khorasan	30			
			16.4 x11.4	1930's Irish Donegal	97	18.9 x13	Late 19 th century Persian Tabriz	43	25 x13.6	Late 19 th century Persian Sultanabad	20
14 x 3.3	Early 20 th century pair of American Hooked Runners	151	16.4 x12.3	Late 19 th century Persian Malayer	123	18.10 x 9.10	Early 20 th century Indian Cotton Agra	124	25.7x12.9	Late 19 th century Persian Bidjar	16
			16.4 x12.8	Early 20 th century Turkish Oushak	59	18.10 x14.7	Early 20 th century Turkish Oushak	113			
14 x10	Late 19 th century Persian Kirman	42	16.4 x15.9	Mid 19 th century Turkish Hereke	9				27.2x16.6	Late 19 th century Persian Sultanabad	76
14.6 x 8.4	Late 19 th century Persian Tabriz	51	16.5 x 9.9	Early 20 th century Turkish Oushak	34	19 x11.8	Late 19 th century Persian Kirman	53	27.5 x16.2	Late 19 th century Persian Tabriz	75
14.7 x10.9	Late 19 th century Persian Tabriz	83	16.7x10.3	Late 19 th century Persian Tabriz	77	19 x13.1	Late 19 th century Persian Kirman	32			
14.7x11.8	Late 19 th century Turkish Oushak	22	16.8 x12.8	Late 19 th century Turkish Hereke	119	19 x13.4	Late 19 th century Indian Agra	79	29.6 x14.7	Early 20 th century Persian Kirman	21
			16.8 x13.2	Late 19 th century Persian Tabriz	118						





Late 19th century Indian Agra 17.2x14.2



Early 20th century Persian Malayer 15 x11.5



Late 19th century Indian Agra 16 x12

14



Late 19th century Persian Sultanabad 16.10 x 11.10

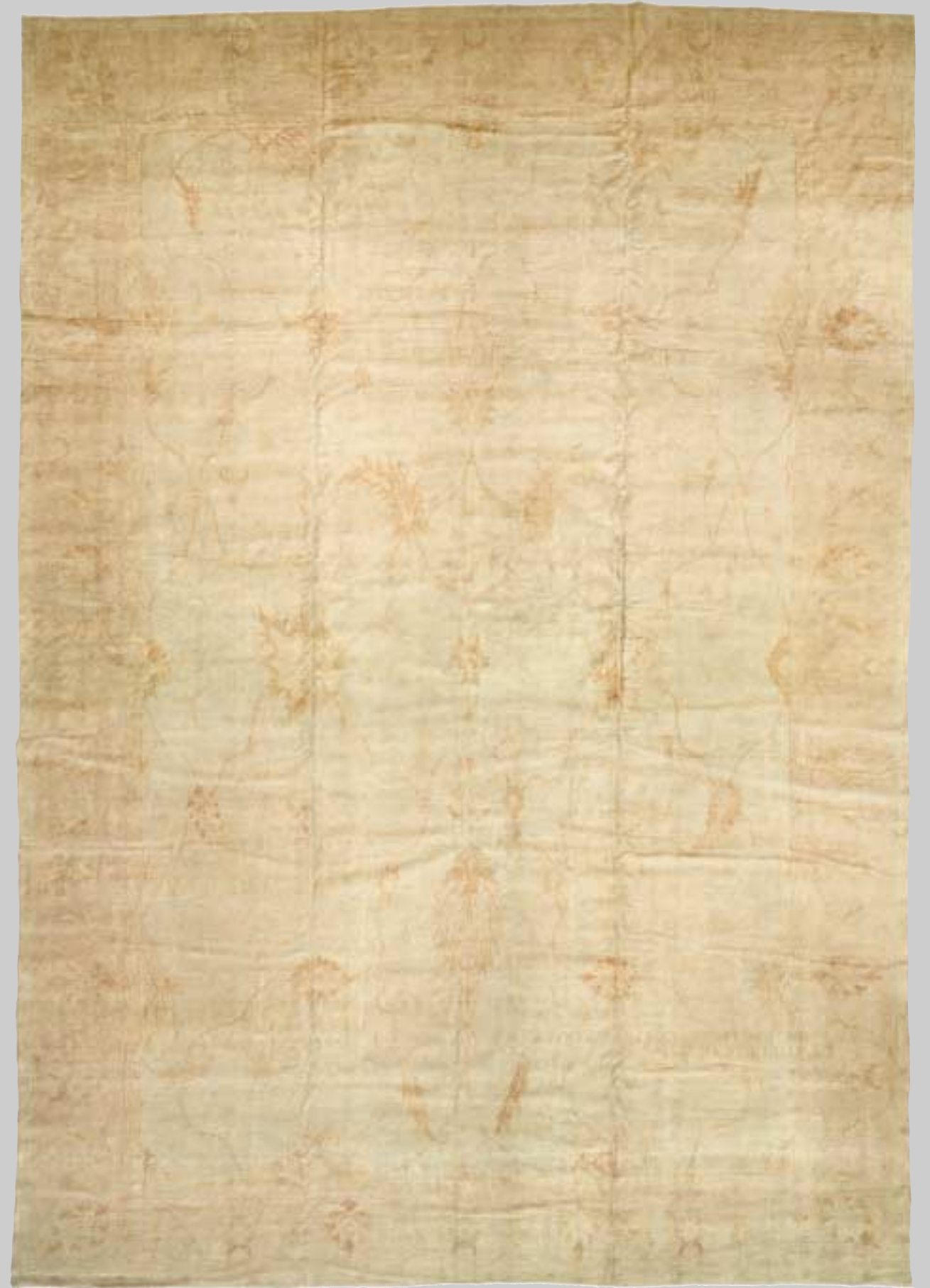
15



Late 19th century Persian Tabriz 13 x 9.4



Late 19th century Persian Bidjar 25.7x12.9



Late 19th century Turkish Borlou 20 x14



Early 20th century Persian Khorassan 17.7x12.6



Late 19th century Persian Kirman 15.5 x12



Late 19th century Persian Sultanabad 25 x 13.6



Early 20th century Persian Kirman 29.6 x 14.7



Late 19th century Turkish Oushak 14.7x11.8



Late 19th century Indian Amritsar 23.2x12.8



Brussels Part Silk Fragmentary Tapestry Weave
carpet signed H. Reydams circa 1700 13.8x11.7



Early 20th century Persian Tabriz 10.7 x 8



Late 19th century Persian Sultanabad 16.10 x 13.2



Late 19th century Persian Sultanabad 18x11.2



Early 20th century Indian Lahore 19.6x12



Late 19th century Persian Khorasan 18.8 x 16



Late 19th century Persian Sarouk 21.2 x 13.9



Late 19th century Persian Kirman 19x13.1



Early 20th century North Indian (size adjusted) 16.8x13.10



Early 20th century Turkish Oushak 16.5 x 9.9



Late 19th century Persian Sultanabad (size adjusted) 16.9 x 12



Late 19th century Persian Tabriz 12.7 x 8.10



Late 19th century Indian Agra 16 x 14



Late 19th century Persian Tabriz 12.9 x 9.9



Early 20th century Indian Amritsar 16.10 x 14.4





Late 19th century Persian Kirman 14 x10



Late 19th century Persian Tabriz 18.9 x13



Early 20th century Persian Tabriz 17.3x11



Late 19th century Persian Bidjar 11.7x9



Late 19th century Turkish Oushak 16.3 x 13.8



Late 19th century Persian Kirman 20.2 x 13



Mid 19th century Turkish Ghiordes 17.8x12.9



Late 19th century Persian Tabriz 17.9x13.4



Early 20th century Persian Tabriz 16 x 12.4



Late 19th century Persian Tabriz 14.6 x 8.4



Late 19th century Persian Tabriz 17.10x11



Late 19th century Persian Kirman 19x11.8



Late 19th century Persian Sultanabad 22.8 x 12.3



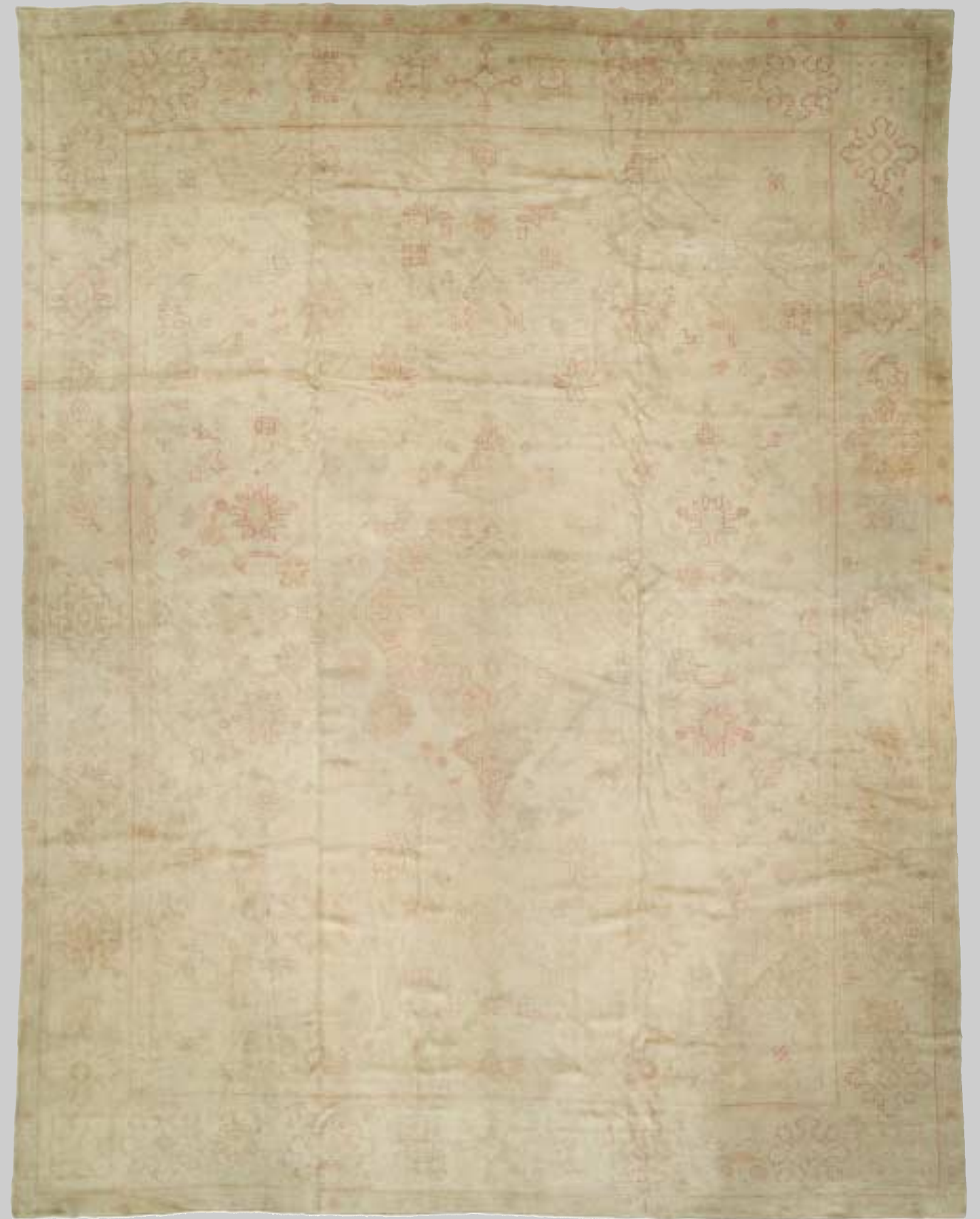
Late 19th century Persian Kirman 22.5 x 14.3



Early 20th century Persian Malayer 24.10 x13.7



Early 20th century Persian Tabriz 13x10



Early 20th century Turkish Oushak 16.4x12.8



Early 20th century Indian Cotton Agra 14.8x11.6



Late 19th century Persian Tabriz 21x14



Late 19th century Persian Khorassan 19x13.10



Late 19th century Persian Feraghan 17.6x11.3



Early 20th century North Indian 19.10x15.5



Late 19th century Persian Kirman 22.9x13.6



Early 20th century Persian Tabriz 13.10 x 8.5



Late 19th century Persian Kirman 12.5 x 9



Late 19th century Indian Amritsar 15.2x11.10



Late 19th century Indian Amritsar 12 x 9



Late 19th century Indian Amritsar 17.2 x 14.9



Late 19th century Persian Sultanabad 13.10 x 11





Late 19th century Persian Sultanabad 16.9x14



Late 19th century Persian Tabriz 27.5x16.2



Late 19th century Persian Sultanabad 27.2x16.6



Late 19th century Persian Tabriz 16.7x10.3



Late 19th century Persian Sultanabad 17.6x12.10



Late 19th century Indian Agra 19x13.4



Late 19th century Persian Sultanabad 13.5 x 11.9



Late 19th century Persian Sarouk Feraghan 17.6 x 12.2



Late 19th century Persian Kirman 17.6x11.2



Late 19th century Persian Tabriz 14.7 x10.9



Late 19th century Persian Tabriz 11.4 x 9.6



Late 19th century Persian Tabriz 15 x 10.5



Early 20th century Persian Tabriz 15.7x10.8



Late 19th century Persian Tabriz 11.10 x 9





Late 19th century Persian Sultanabad 15.6x11.4



Indian Agra 1870 circa 20.6x15.6



Early 20th century Persian Tabriz 12.2 x 8.3



Late 19th century Persian Senneh 16 x 10.3



Late 19th century Chinese 17.7 x 13.9



Late 19th century Chinese 19 x 15.2



Early 20th century Chinese (size adjusted) 13.2 x 8.3



1930's Irish Donegal 16.4 x 11.4



Late 19th century Turkish Oushak 18.7x12.10



Late 19th century Persian Kirman 16x12



Mid 19th century Turkish Ghiordes 19.6x16.7



Late 19th century Indian Agra 17.6x13.5



Late 19th century Persian Kashan 19.7 x12.7



Late 19th century Indian Agra 15.7x12.2



Early 20th century Indian Cotton Agra 19x13.8



Early 20th century Turkish Oushak 14.9x11.4



Early 20th century Cotton Agra 13.2 x 9.9



Early 20th century Persian Tabriz 14.7x11.9



Late 19th century Indian Amritsar 16.2x13.9



Mid 19th century Persian Feraghan 13.2x10.3



Late 19th century Persian Meshad 21.7x16.6



Late 19th century Persian Tabriz 19.5x14.6



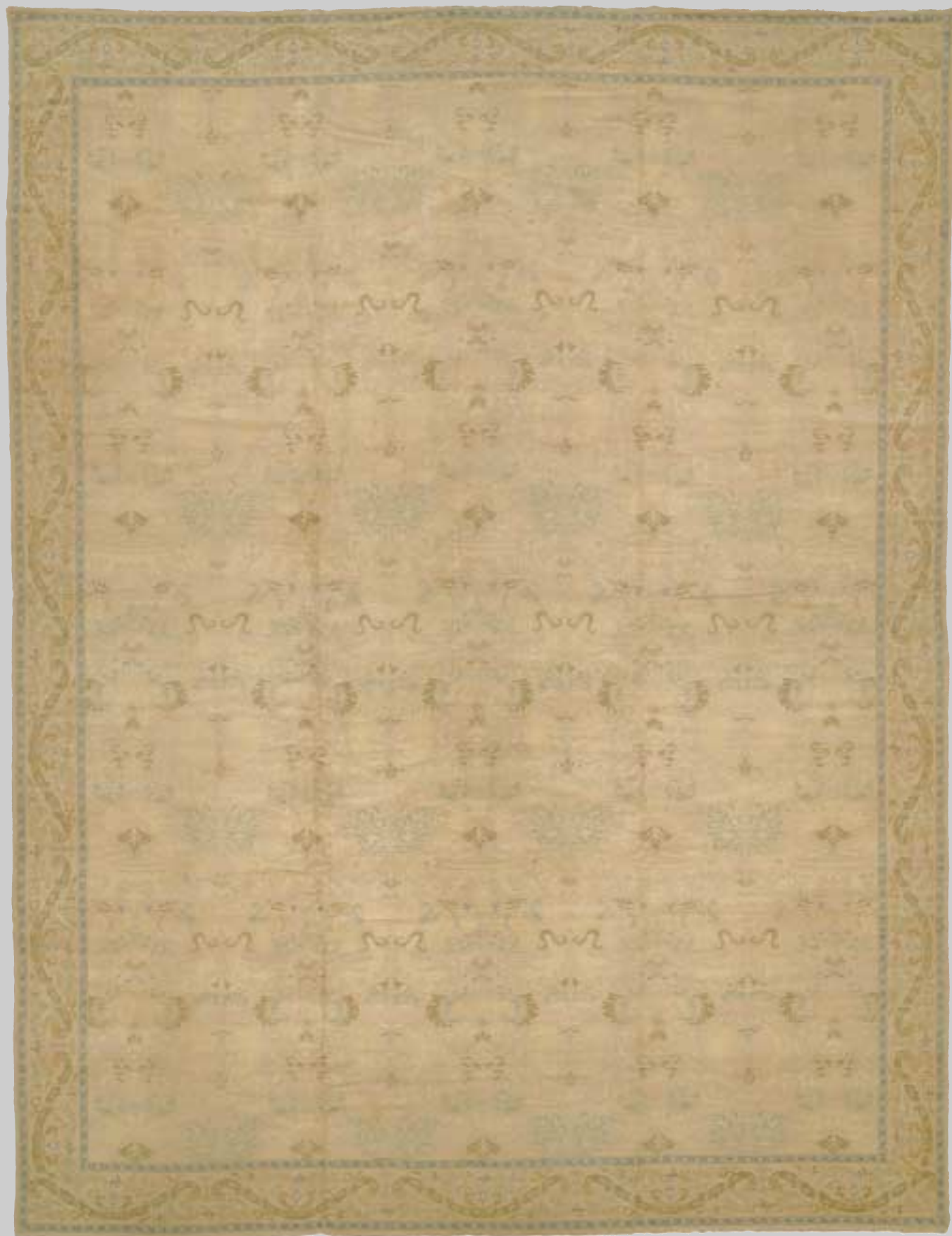
Early 20th century Turkish Oushak 18.10x14.7



Late 19th century Turkish Oushak 18.4 x13.10



Mid 19th century Persian Bakshaish 15.6x11.10



1920's Spanish 19x14.6



Late 19th century Persian Tabriz 16.2x11.8



Late 19th century Persian Tabriz 16.8x13.2



Late 19th century Turkish Hereke 16.8x12.8





Late 19th century Persian Tabriz 15.5 x 11



Late 19th century Persian Malayer 16.4 x 12.3



Early 20th century Indian Cotton Agra 18.10 x 9.10



Late 19th century Persian Kirman 22.8 x 13.6



Late 19th century Persian Sultanabad 16 x 13.6



Late 19th century Persian Tabriz 12.9 x 9.6



Late 19th century Persian Kirman 18.5x12



Late 19th century Persian Sultanabad 20.2 x14



Early 20th century Oushak 12.6x11.2



Late 19th century Persian Kirman 20.4 x16.4



Late 19th century Turkish Ghiordes 16 x13.5



Late 19th century Persian Kirman (size adjusted) 21.5 x16.10



1930's Chinese 18.6 x 8.8

Early 20th century Chinese 18.7 x 9.7

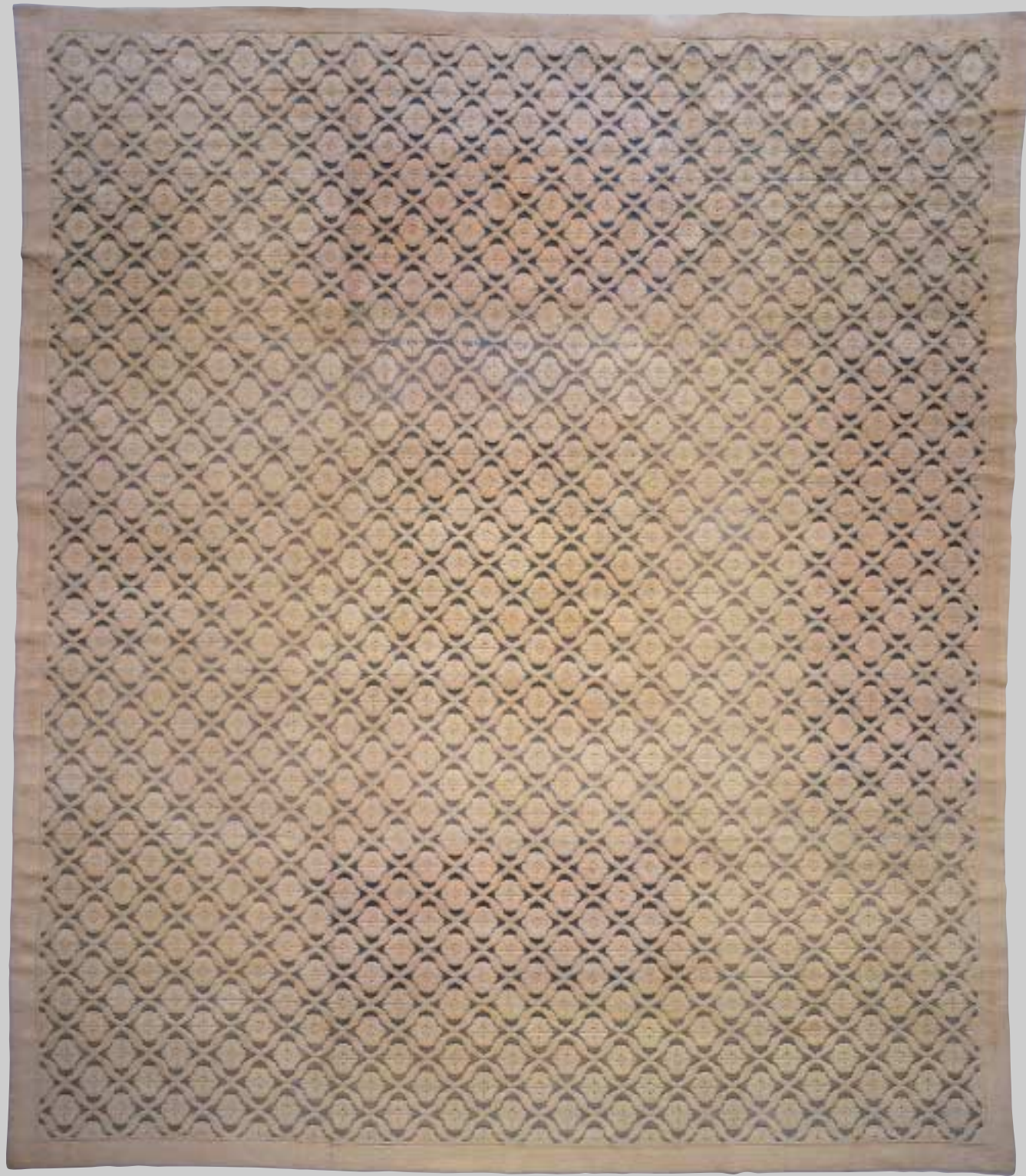




French Modernist attributed to "Jean Burkalter" 10.8 x 7.4



1940's French 19.8 x 13.2



1950's French Modernist Multi Technique 15.9x13.10



French carpet by Jules Coudyser circa 1920 12.9x10



Late 19th century Tibetan 14.10x14.2



Irish Donegal Designed by Gavin Morton circa 1910 14.8x12



French Modernist circa 1930 13.10x11



Mid 20th century American Hooked 10.10x9.10



1920's Chinese Deco 11.6 x 8.5



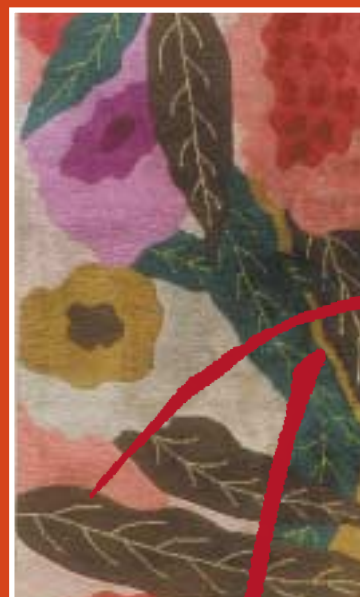
1920's Chinese 13 x 9.5



1930's Chinese Deco 18.8x14



Early 20th century pair of American Hooked Runners 14 x 3.3



Doris Leslie Black

Reproduction or copyng
of the displayed rugs is
strictly prohibited and
will be prosecuted to the
fullest extent of the law.

Doris Leslie Blau Ltd
Antique Carpets

724 Fifth Avenue
New York, N.Y. 10019
Tel. 212 586 5511
Fax 212 586 6632

dorisleslieblau.com

graphic design
Paolo Sèstito
p.sestito@libero.it

printed in Rome - Italy
Selegrafica '80
Tel. 0774-358330 r.a.
www.selegrafica.it
info@selegrafica.it

fotocomposizione e fotolito
Composit srl
Tel. 06-4065334 - 064065341
composit.srl@flashnet.it